



Color adjustments using the iJetColor RIP

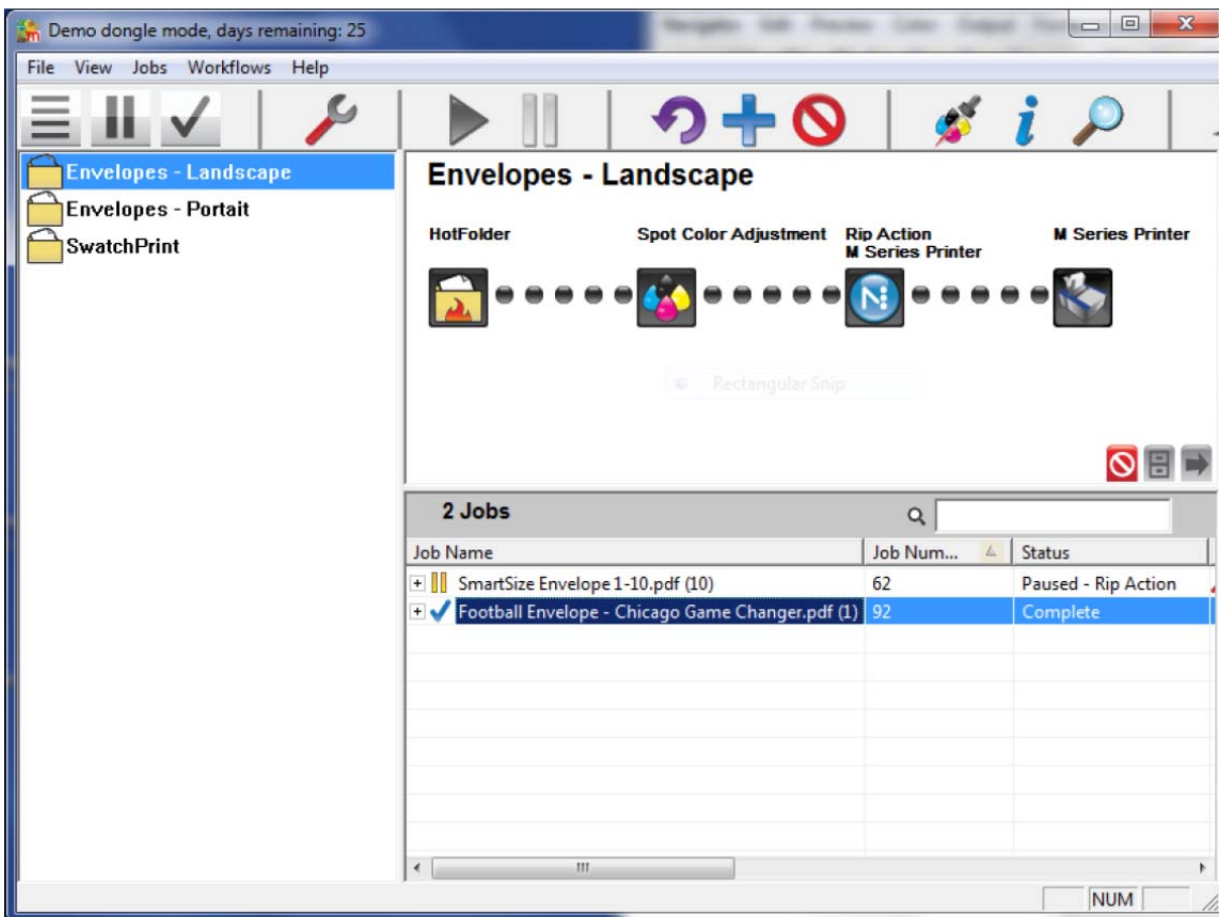
Summary: How to use the iJetColor RIP and mColor to adjust the color output.

Applicable Products: iJetColor, mColor

Spot Color Adjustments

Spot Color adjustments take the form of a workflow action. For CMYK output devices such as an JetColor Press it allows changes to the CMYK recipe for a particular spot color.

The spot color adjustment tool may be dropped into any workflow. The function requires PDF files with identified spot colors to operate. Below is a workflow with spot color adjustment enabled.





Product Technical Bulletin

PTB0614



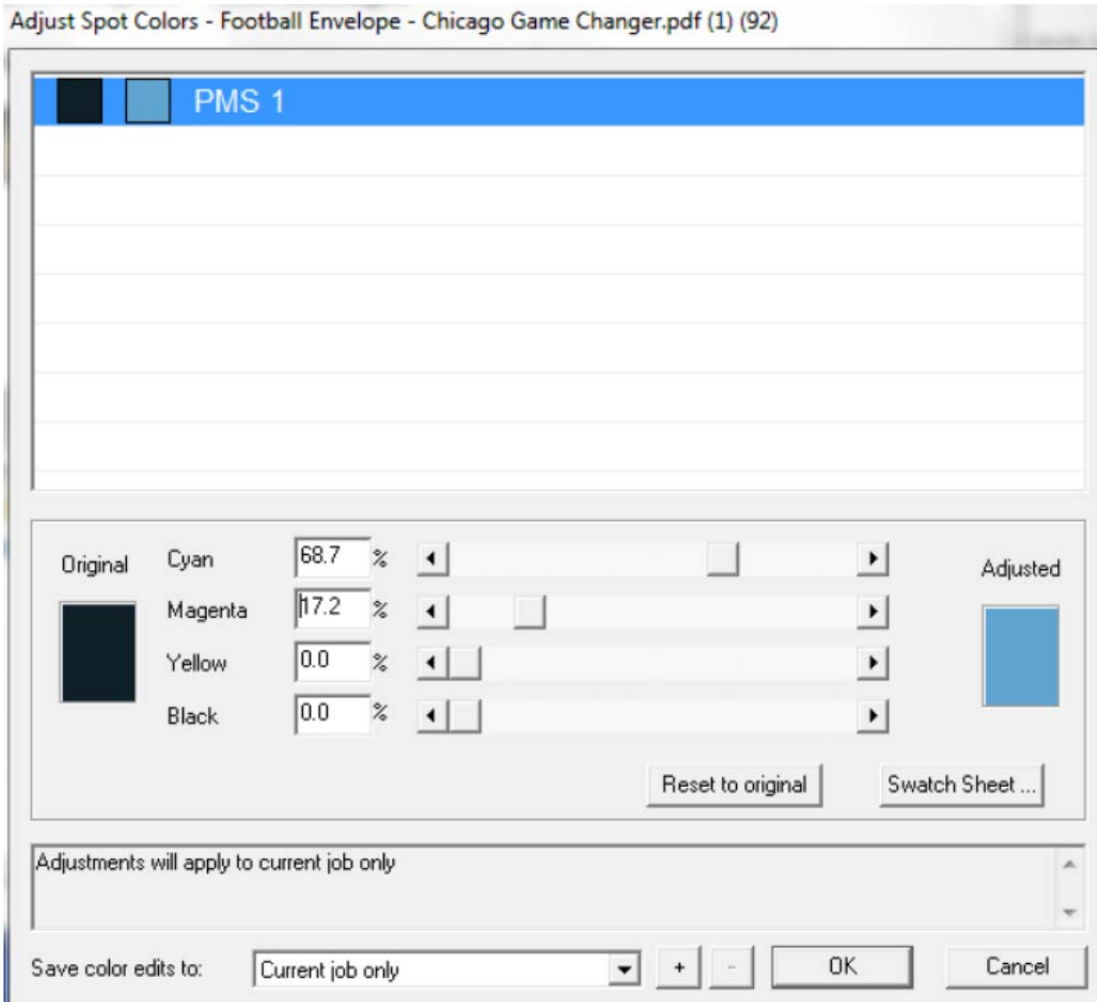
Printware

If you wish to adjust the colors for each job, put a pause after the spot color adjustment in the workflow editor. If you only wish to adjust colors after having first printed a copy, put no pause. After outputting one copy, right-click the job and choose “spot colors” from the contextual menu.

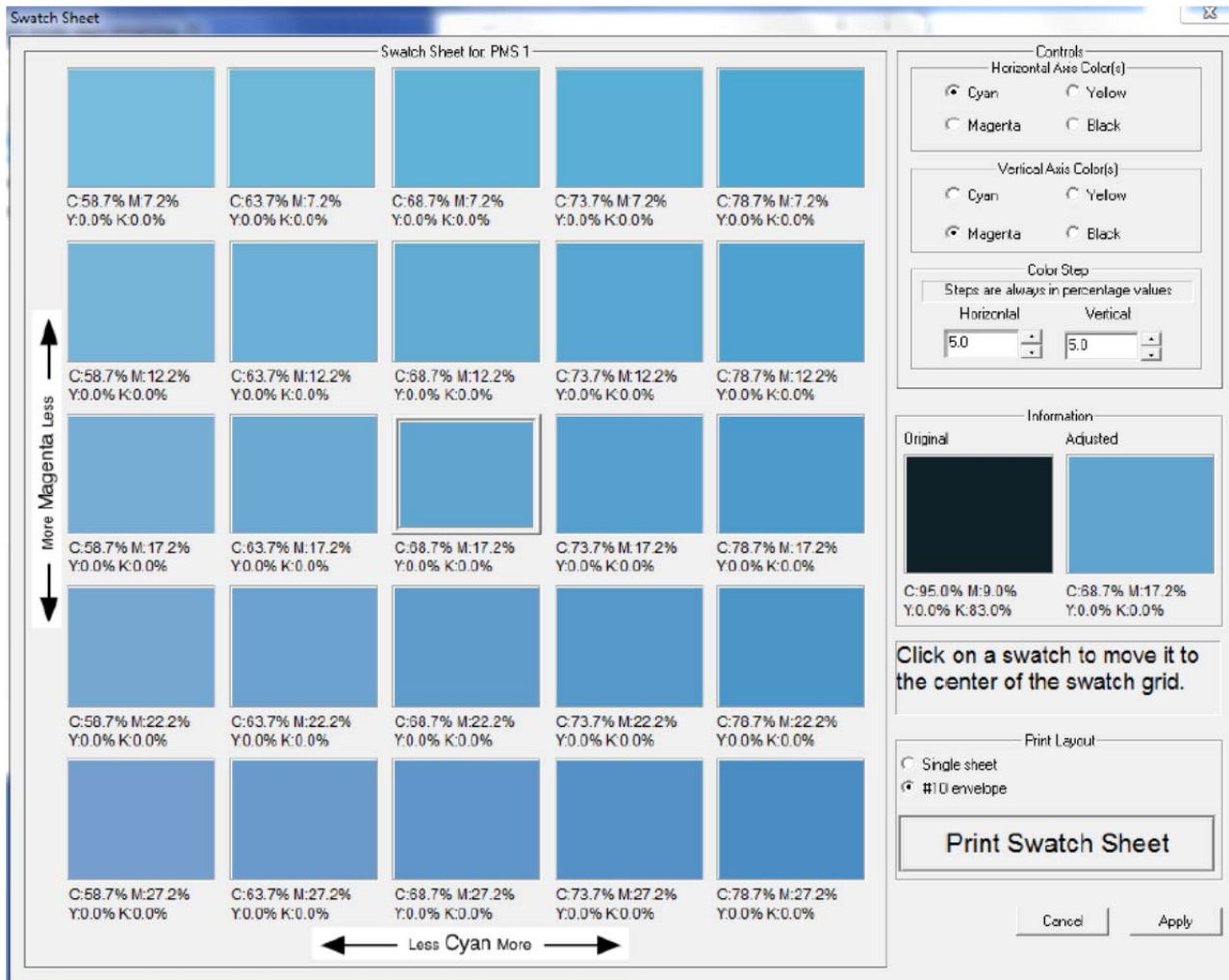


(or click the  button at the top of the screen)

This will allow you to enter the spot color adjustment dialog box.



If the user is comfortable editing the Cyan, Magenta, Yellow, and Black values directly, they may do so here. Most users will prefer some help from the system in getting the right color. Click “Swatch Sheet” in order to get that help.



The swatch sheet window has controls allowing the user to vary the color from swatch to swatch and print out a letter-sized sheet or a #10 envelope with a swatch sample resembling the swatch window.

Choose two colors to change and choose a step amount to control how much the change will be.

Choose a paper size and click Print Swatch Sheet. Your swatch sheet will print.

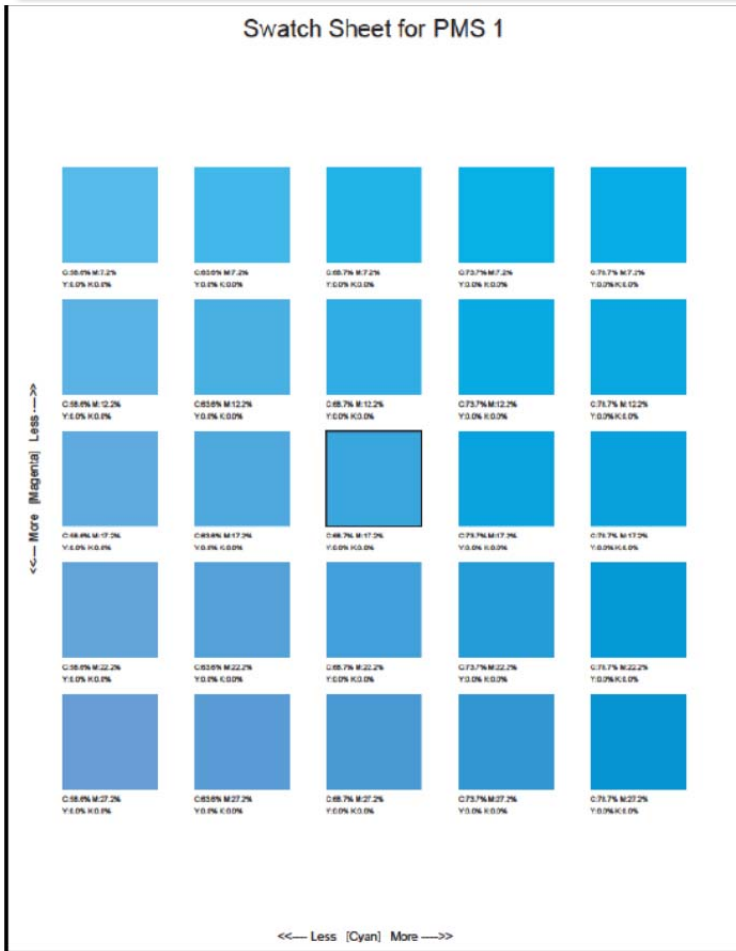


Product Technical Bulletin

PTB0614



Printware

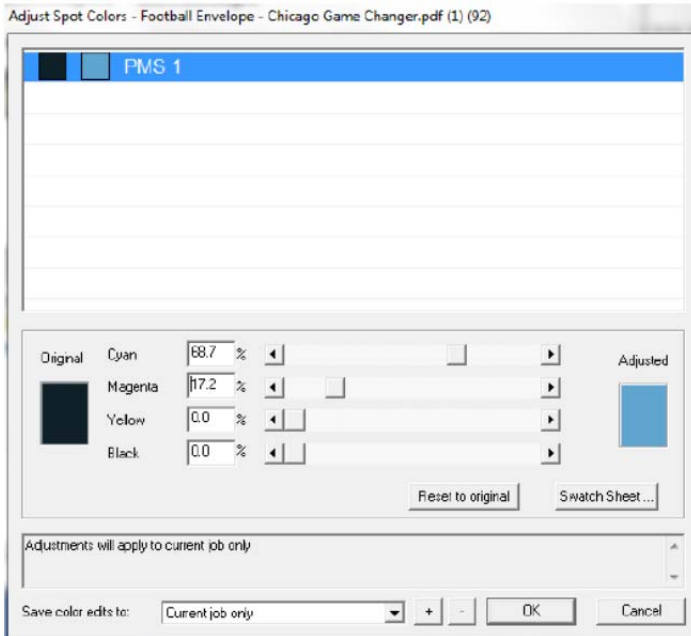


You may fold it, tear it, use it however you like. Compare it to acceptable printed output, compare it to a printed swatch book, or anything at all that you would like to get closer to. Click the square you think is closest and it will become the center square. Then, you can output again and try to get closer, or commit the changes and output your job.

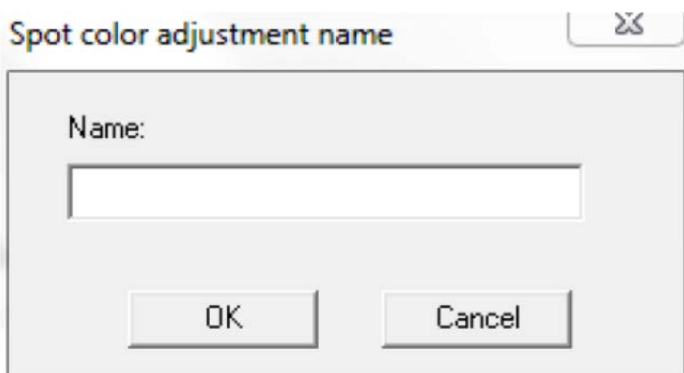


Spot Color adjustment databases

Once you adjust a color, you are free to use it again and again as long as you save it in a database.



Instead of leaving the color edits to affect “Current Job Only”, choose a database from the drop down menu to save them to. Or click the + sign to the right to create a new database.



Pick a name that will help you to know when to use this database in future.



Spot color adjustment name

Name:



My New Spot Color Library

OK Cancel

Adjust Spot Colors - Football Envelope - Chicago Game Changer.pdf (1) (92)

PMS 1

Window Snip

Original				Adjusted
	Cyan	68.7 %	<input type="text"/>	
	Magenta	17.2 %	<input type="text"/>	
	Yellow	0.0 %	<input type="text"/>	
	Black	0.0 %	<input type="text"/>	

Reset to original Swatch Sheet ...

This database fixes spot colors from our best customer

Save color edits to: My New Spot Color Library + - OK Cancel

Add notes that help to describe the proper use of the database.



iJetColor



Printware

You can then choose this database in a workflow so that it automatically processes incoming jobs with the color edits in that database. No user intervention required. You might name a database after a particular customer, or a paper stock.

HotFolder



Spot Color Adjustment
My New Spot Color Li...



Rip Action
M Series Printer



M Series Printer



General | **HotFolder** | Spot Color Adjustment | Rip Action | Rip Action Output

Pause After

To adjust spot colors in a job, select Pause After, process a job, and select "Spot Colors..." in its context menu.

Process spot colors using:

This database fixes spot colors from our best customer



iJetColor

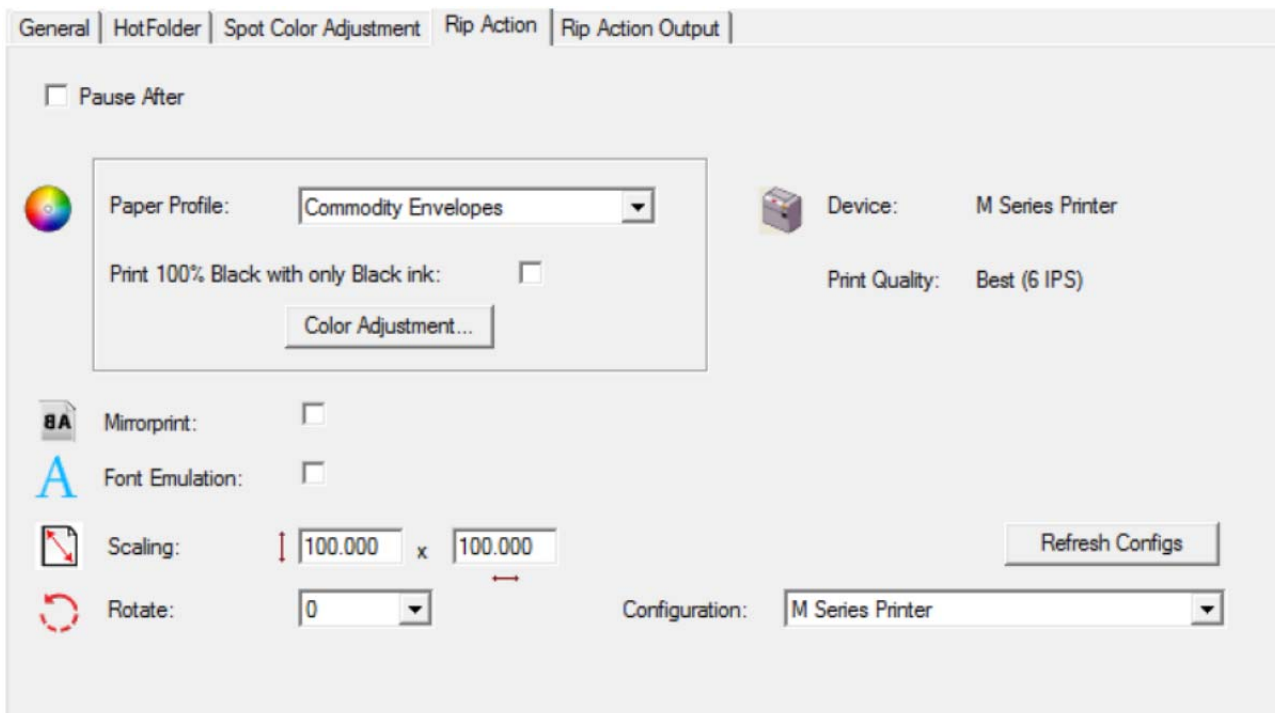


Printware

Global Color Adjustment

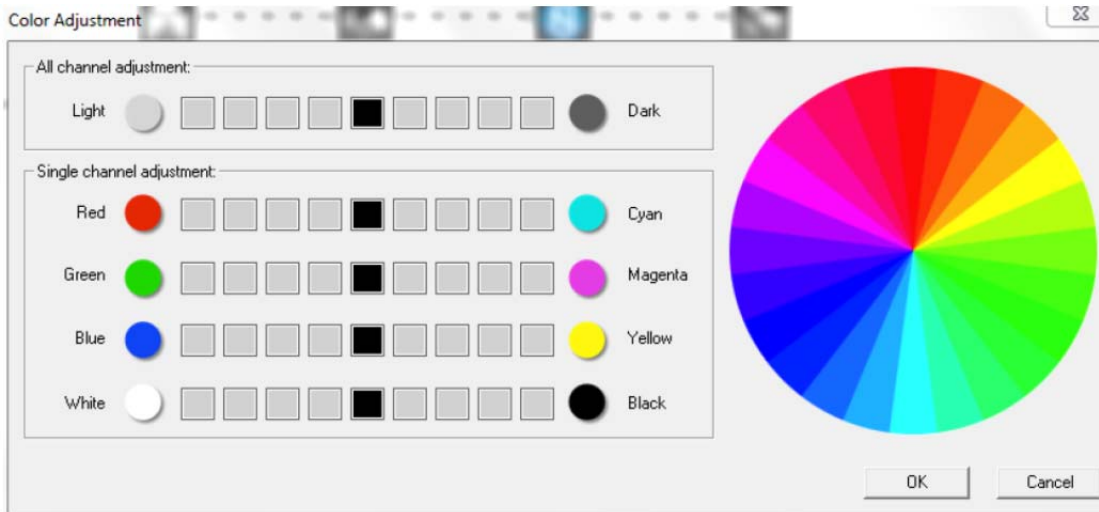
Global color adjustment works on any file format the system accepts. (e.g. postscript, PDF, EPS, TIFF) It works on every color in a job. Whether the job contains RGB, CMYK, spot colors, or a combination of all of these, the global color adjustment tool will adjust the color of the entire job.

Its function is simple. When you wish to use it, right-click a job and choose “edit workflow for this job”. On the RIP tab click “color adjustment”





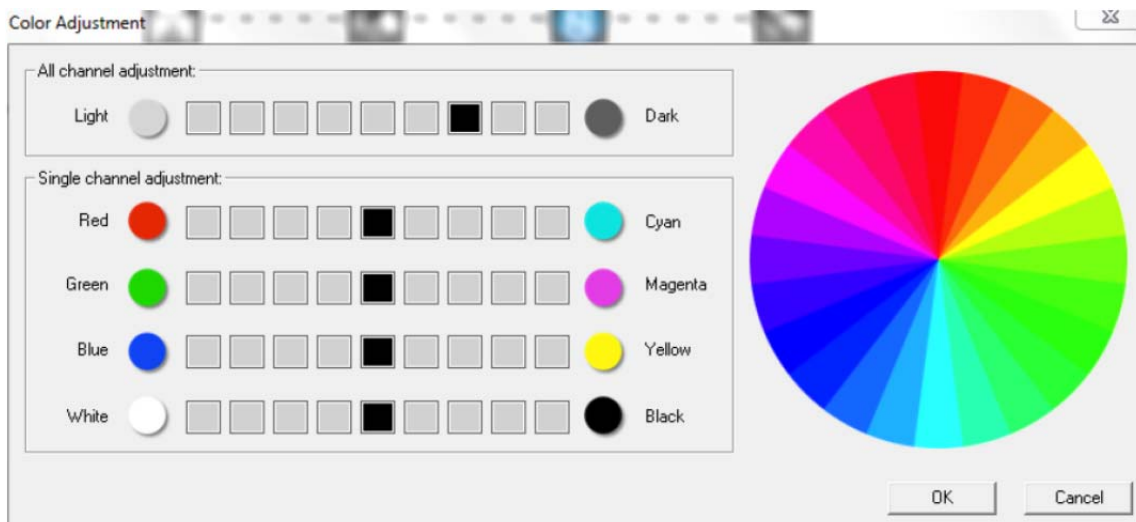
When you click color adjustment the window pops up



Simply click to the right or to the left.

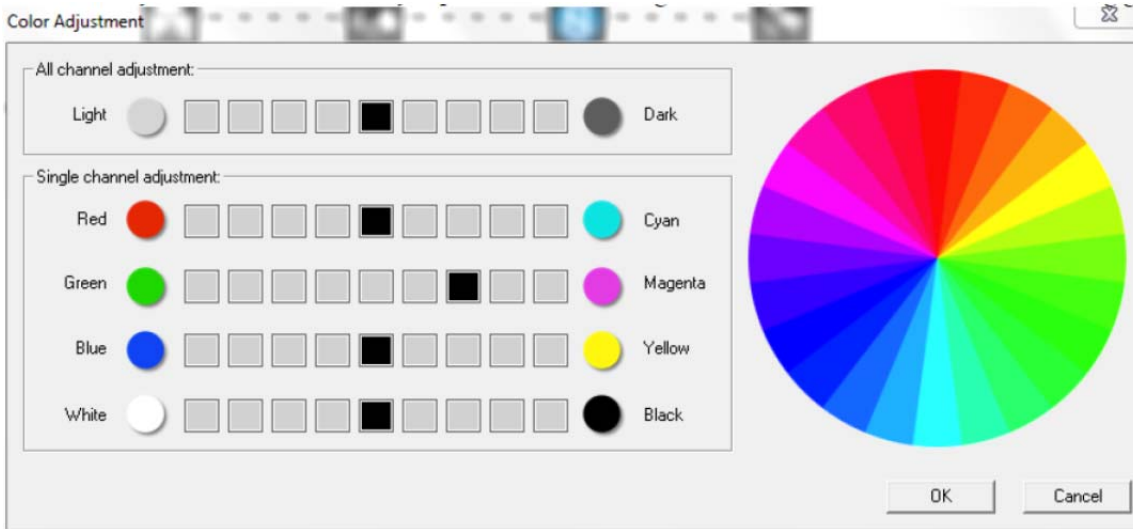
The color wheel is provided as a reference to color relationships. When you add cyan ink, it has the effect of removing red from a job. When you remove yellow it has the effect of increasing blue.

The color adjustment below will make the job darker.

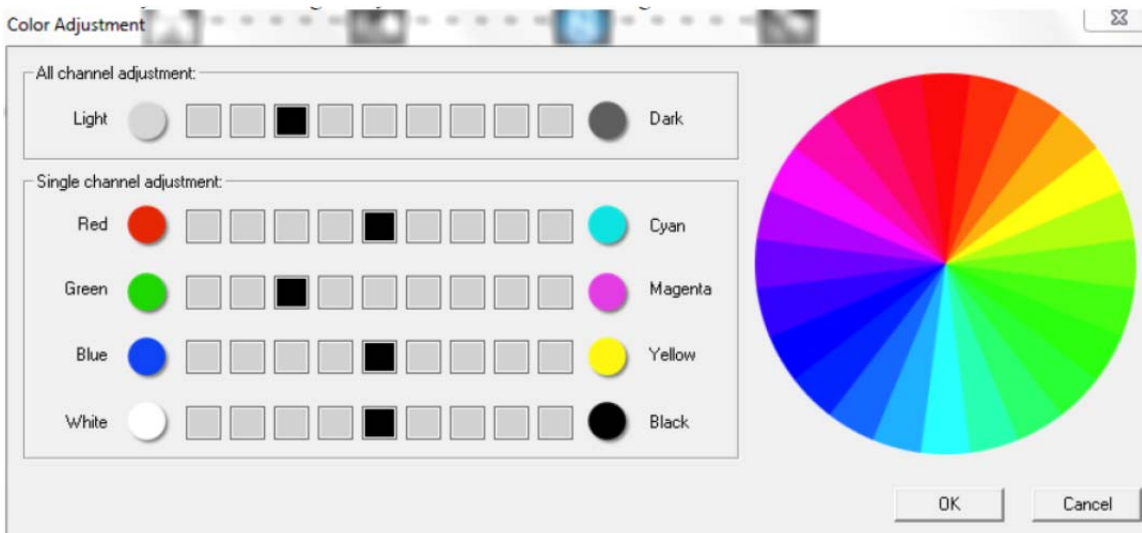




This color adjustment will make the job print with more magenta ink (which has the effect of reducing green).



This color adjustment will lighten job and also remove magenta.





iJetColor |

Powered by
memjet

Product Technical Bulletin

PTB0614

Printware
